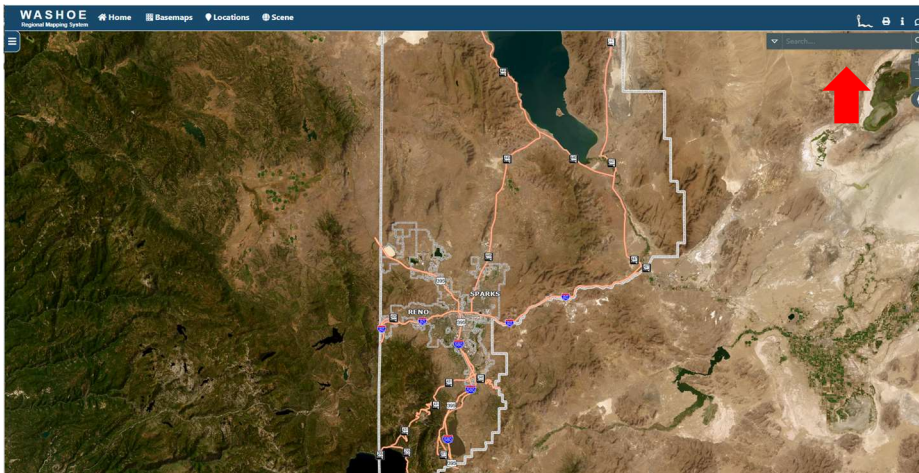


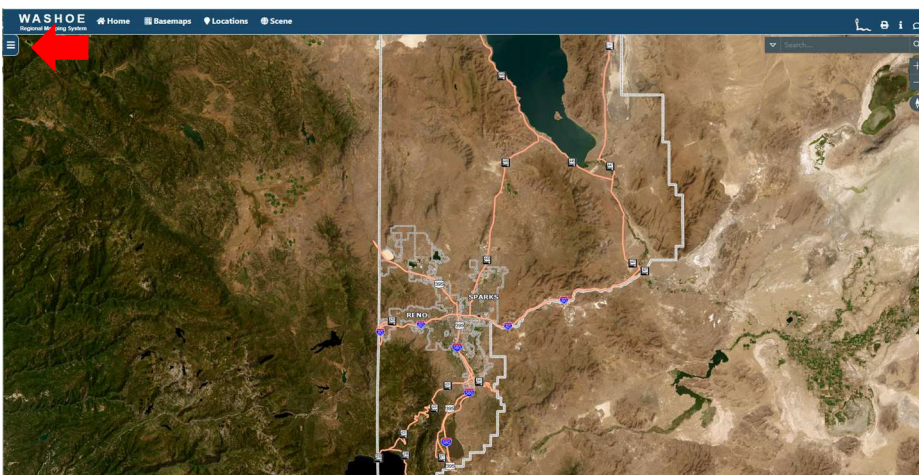
MAPPING INSTRUCTIONS

For stationary facilities, the site map must depict the physical location of the facility and identify the main entrance, property boundaries, and all buildings and structures on the site as they relate to the facility emission units (EU's). For portable equipment, the map must delineate the location of the portable equipment and the maximum proposed area for the facility's operation. The proposed area for the facility's operation should include all associated equipment, stockpiles, haul routes, etc.

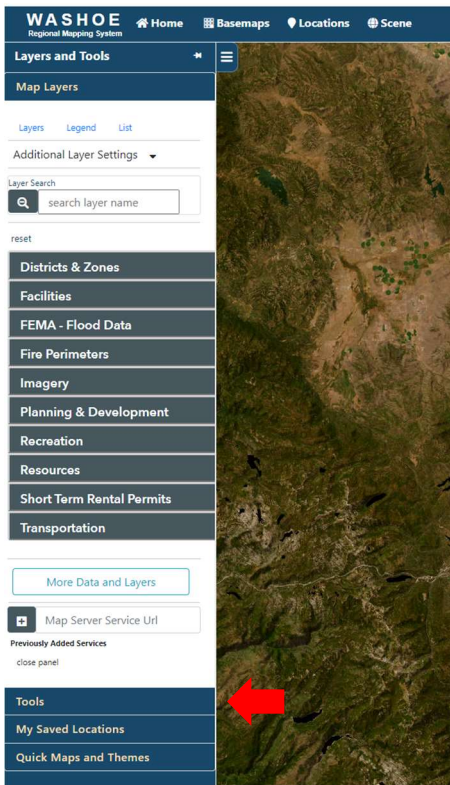
1. Go to the Washoe Regional Mapping System website:
<https://gis.washoecounty.us/wrms/?auth=0>
2. Use the "Search" option on the right-hand side of the screen to find your parcel. Once you hit enter, the parcel will be highlighted blue.



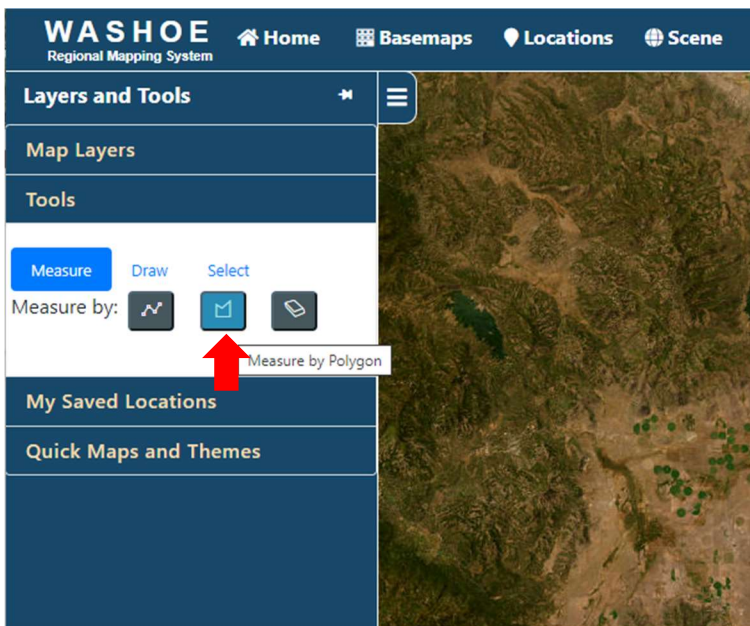
3. Locate and select the menu toggle with the three horizontal lines on the left-hand side of the screen.



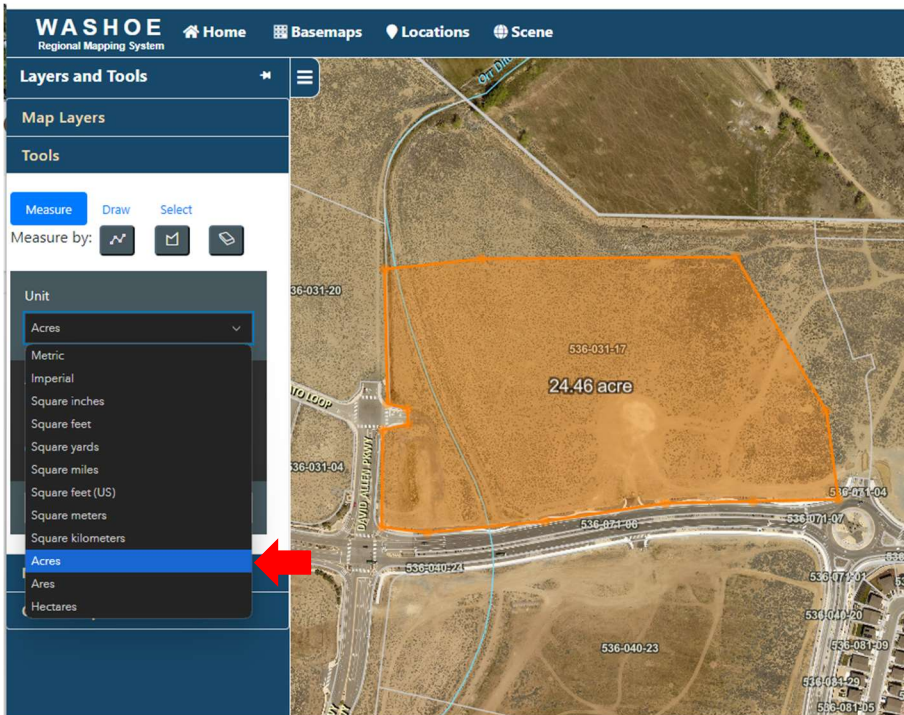
4. Locate and select “Tools”. A menu will appear with “Measure”, “Draw”, and “Select” as the options.



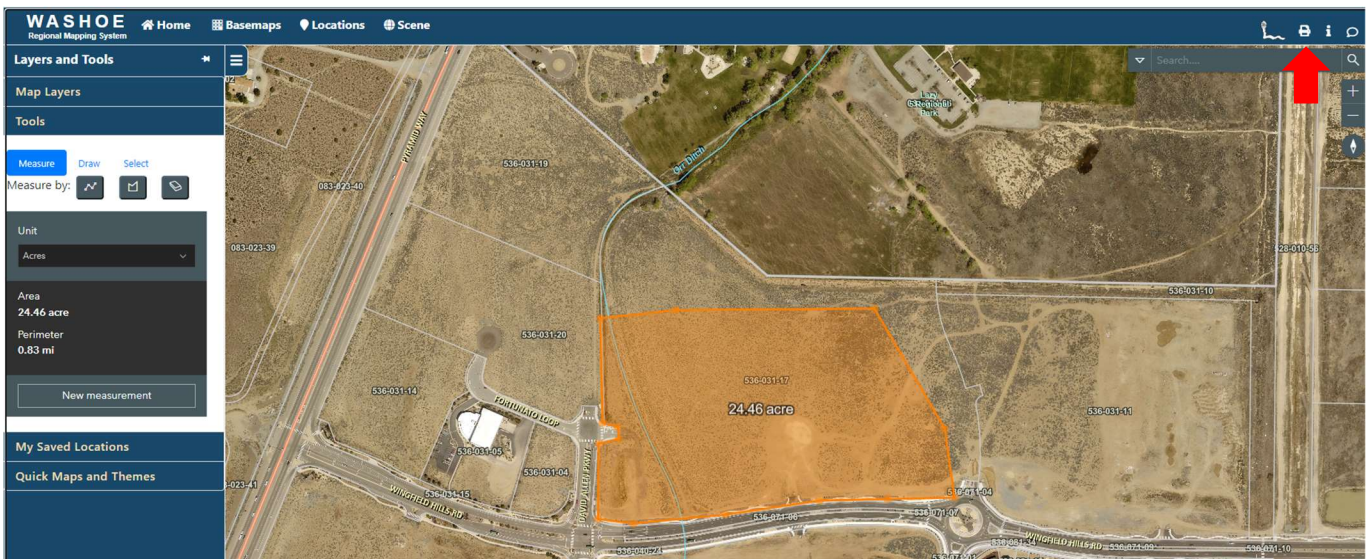
5. To measure the maximum proposed area for the source’s operation, select “Measure”, then measure by polygon as shown below. Start measuring by clicking on the map to place your first point. To close the polygon, double click on the last point.



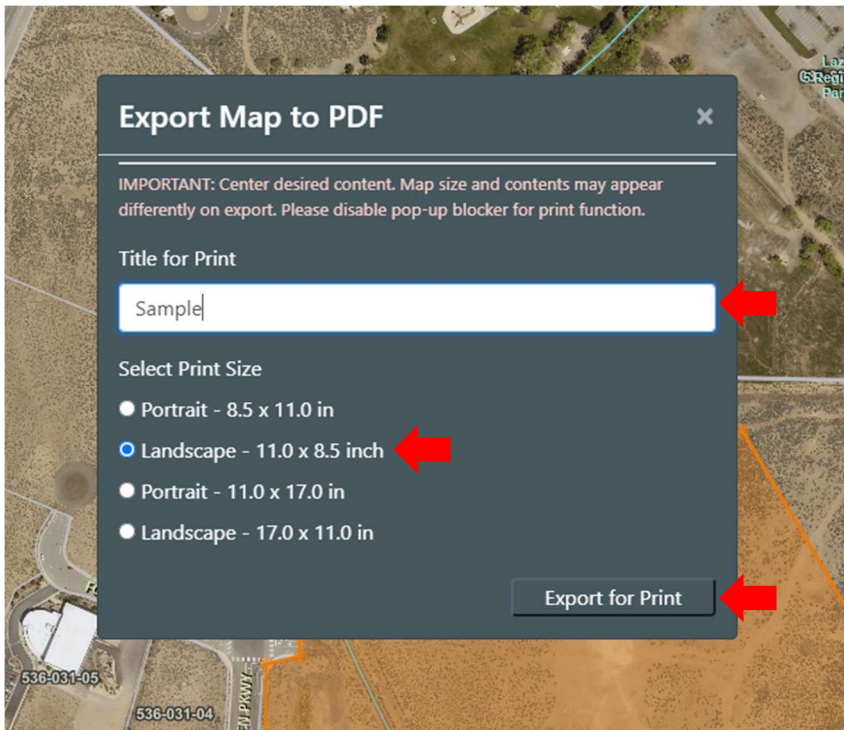
6. Change the unit to acres as shown below.



7. Next, you will export the map to be saved as a pdf or be printed. Make sure the desired content is centered and ensure your pop-up blocker is disabled. Click "Print" by selecting the printer icon in the upper right-hand corner.



8. Enter a name for your document where it says “Title for Print”, then select a size and orientation. Select “Export for Print”.



9. The map will appear in a pop-up window or another tab in your browser. You can save the map as a pdf or print as needed.

